



## 2015/16 Product Guide

featuring Interpart product range

**BAXI**  
Genuine Parts

## We've got what you need

We stock over 17,000 parts. Many parts are available next day, ensuring we provide your customers with the tools they need to get the job done.

## Why Baxi Genuine Parts?



Fully compliant with Gas Safe Regulations, protecting installers and consumers from the impact of installing non-genuine parts



All parts have to meet our rigorous quality control standards and come with a one year warranty for added peace of mind



Designed to work better and for longer, cutting down on unnecessary cost of buying replacement parts



[www.baxigenuineparts.co.uk](http://www.baxigenuineparts.co.uk)

Interpart has been a trusted supplier of genuine parts for over 30 years, and now comes with a new name, **Baxi Genuine Parts.**

The name change, which follows extensive research with our customers, makes sure our UK activities are more transparent by bringing our entire service offering under one roof, Baxi.

By making it clear we're the Baxi specialists, we promote all the advantages of Baxi: high quality standards, reliability, safety, superior performance and outstanding technical back-up and support.

We will continue to provide outstanding service for our customers and as Baxi consolidates its efforts and invests in the future, our customers will expect and experience even higher service standards.



interpart



## Interpart Motorised Mid Position and Zone Valve range.

- Quiet operation
- Like for like replacement  
with market leader
- 2 screws for easy actuator  
head removal
- British Standards Institute  
approved
- Developed by Baxi
- 2 year warranty

### INP0108

#### ZONE VALVE ASS 22 MM 5 W-E

- 22mm 5 wire & earth
- Fits standard 22mm hydraulic systems
- Ball paddle design for improved sealing
- Vented plastic housing for supercool operation

### INP0109

#### MID POS VALVE ASS 22 MM 4 W-E

- 22mm 5 wire & earth
- Fits standard 22mm hydraulic systems
- Ball paddle design for improved sealing
- Vented plastic housing for supercool operation

### INP0112

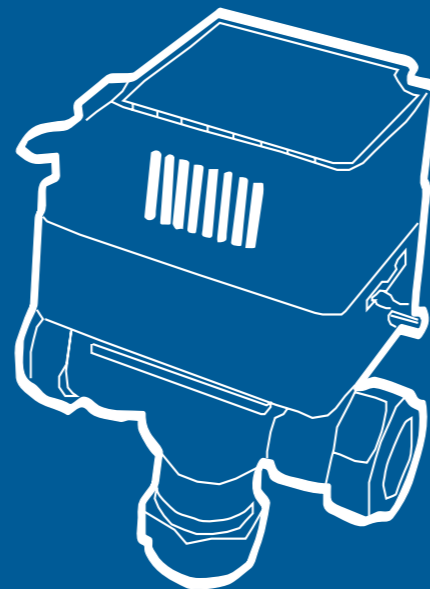
#### ZONE VALVE ASSY 28MM 5 W&E

- 28mm 4 wire & earth
- Fits standard 28mm hydraulic systems
- Ball paddle design for improved sealing
- Vented plastic housing for supercool operation

### INP0113

#### MID POS ASSY 28MM 5 W&E

- 28mm 4 wire & earth
- Fits standard 28mm hydraulic systems
- Ball paddle design for improved sealing
- Vented plastic housing for supercool operation



## Contents

Interpart range	07
Central Heating Controls	13
Consumables	17
Detectors and Alarms	25
Filters	27
Pumps	31
Tools and Equipment	33
Valves	39
Water Treatment	45
Product List	52

## DETECTING CO IN VOIDS

Many homes have boiler flues that cannot be inspected because they lie behind walls or ceilings.

Gas industry guidance, which came into effect in the UK on 1 January 2013, requires any Gas Safe registered engineer to recommend the installation of inspection hatches in buildings where part of the flue system cannot be seen.



The NoCO system is the **only** alternative to fitting hatches.



**Suitable for  
Landlords  
and Housing  
Associations**

### THE NoCO SYSTEM

The NoCO systems includes detectors and a Boiler Shutdown Control, if carbon monoxide is detected in the home, the NoCO alarm will sound and send an automatic signal to the boiler to ensure that it is shutdown to prevent any further carbon monoxide entering the atmosphere.

There are three NoCo components, Boiler Shutdown Control, In-Void Detector, and in-room Alarm and are available as individual items as each installation will differ subject to boiler location and flue length. All with a two year warranty.

## INTRODUCTORY OFFERS



**7211366**

### BOILER SHUTDOWN CONTROL

- Easy wireless setup
- Simple single tool installation
- Status indicators and test button
- Fits any boiler using switched live



**7211367**

### IN VOID DETECTOR

- Easy wireless setup
- Simple single tool installation
- Status indicators and test button
- 7 year battery life

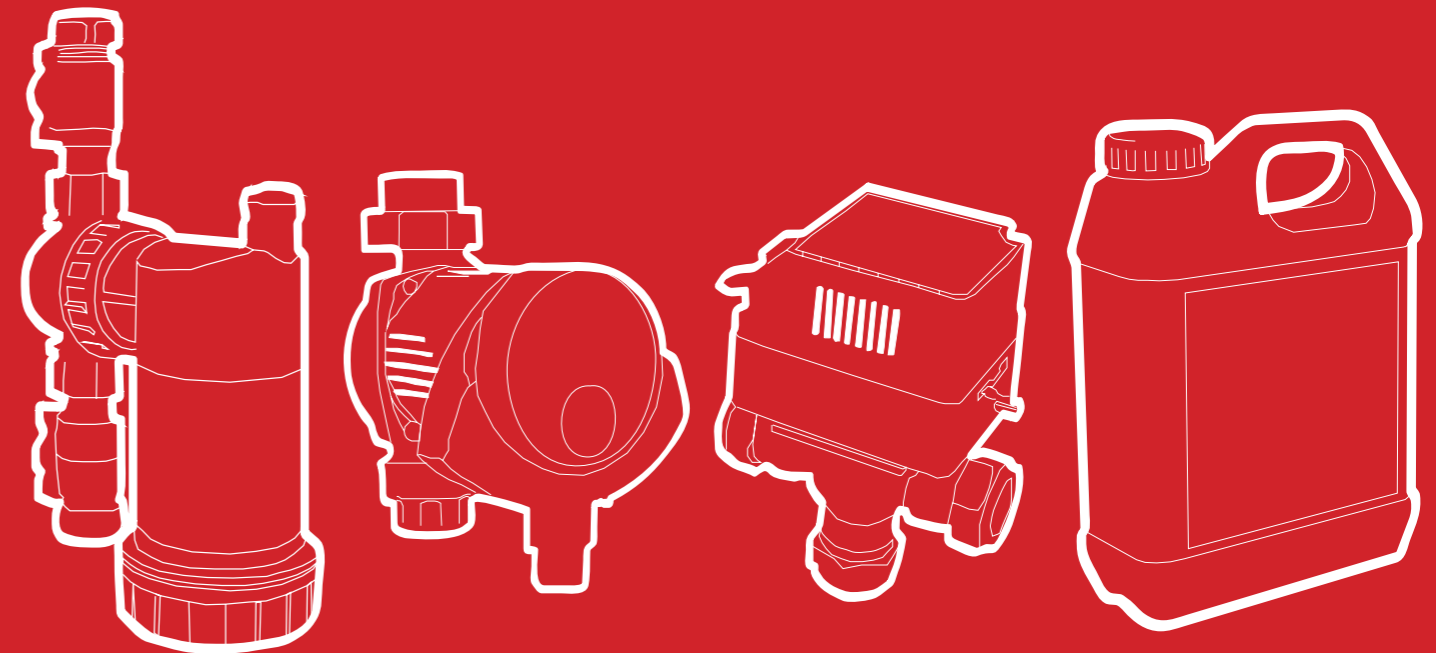


**7211368**

### IN ROOM ALARM

- Easy wireless setup
- Simple single tool installation
- Status indicators and test button
- 7 year battery life

## Interpart Range



To find out more visit  
[www.no-co.co.uk](http://www.no-co.co.uk)

**BAXI**  
Genuine Parts



**INP0108**

**ZONE VALVE ASS 22 MM 5 W-E**

- 22mm 5 wire and earth
- Fits standard 22mm hydraulic systems
- Ball paddle design for improved sealing
- Vented plastic housing for supercool operation
- Like for like replacement for market leader



**INP0109**

**MID POS VALVE ASS 22 MM 4 W-E**

- 22mm 5 wire and earth
- Fits standard 22mm hydraulic systems
- Ball paddle design for improved sealing
- Vented plastic housing for supercool operation
- Like for like replacement for market leader



**INP0112**

**ZONE VALVE ASSY 28MM 5 W&E**

- 28mm 4 wire and earth
- Fits standard 28mm hydraulic systems
- Ball paddle design for improved sealing
- Vented plastic housing for supercool operation
- Like for like replacement for market leader



**INP0113**

**MID POS ASSY 28MM 5 W&E**

- 28mm 4 wire and earth
- Fits standard 28mm hydraulic systems
- Ball paddle design for improved sealing
- Vented plastic housing for supercool operation
- Like for like replacement for market leader



**INP0199**

**INTERPART MAGNETIC FILTER 22MM**

- Fits standard 22mm hydraulic systems
- Magnetic and mechanical filtration
- Can be used on any central heating system
- Can be fitted in any orientation for easy access



**INP0310**

**INTERPART MAGNETIC FILTER 28MM**

- Fits standard 28mm hydraulic systems
- Magnetic and mechanical filtration
- Can be used on any central heating system
- Can be fitted in any orientation for easy access



**INP0117**

**HIGH EFFICIENCY 5M PUMP ASSY**

- ErP ready 5m Pump
- 2015 Regulation Ready (EEI<0.23)
- Low Power Consumption
- Standard 1½" Hydraulic fixings



**INP0118**

**HIGH EFFICIENCY 6M PUMP ASSY**

- ErP ready 6m Pump
- 2015 Regulation Ready (EEI<0.23)
- Low Power Consumption
- Standard 1½" Hydraulic fixings



**INP0296**

**BLUE PAPER TOWEL**

- Highly absorbent, 2 ply
- Each sheet 400mm by 250mm
- 100 sheets per roll



**INP0291**

**FLUES IN VOIDS PAD**

- 50 pages per pad
- 3 ply pages
- No Carbon sheet required
- Copies for Landlord/Agent/Homeowner, engineer and tenant records



**INP0292**

**GAS SAFETY INSPECTION REP PAD**

- 50 pages per pad
- 2 ply pages (Copy for Customer and Engineer Records)
- No Carbon sheet required



**INP0293**

**MAINTENANCE/SERVICE CHECK PAD**

- 50 pages per pad
- 2 ply pages (Copy for Customer and Engineer Records)
- No Carbon sheet required



**INP0294**

**LANDLORD GAS SAFETY RECORD PAD**

- 50 pages per pad
- 3 ply pages
- No carbon sheet
- Copies for Landlord/Agent/Homeowner, engineer and tenant records



**INP0295**

**WARNING/ADVICE NOTICE REP PAD**

- 50 pages per pad
- 2 ply pages (Copy for Customer and Engineer Records)
- No Carbon sheet required



**INP0079**

**INHIBITOR OWN BRAND 1 LTR**

- BuildCert Approved
- WRAS Approved
- Suitable for use on mixed metal and plastic systems up to 100 litres



**INP0312**

**INHIBITOR OWN BRAND 500ML**

- BuildCert Approved
- WRAS Approved
- Suitable for use on mixed metal and plastic systems up to 100 litres



**INP0080**

**CLEANER OWN BRAND 1 LTR**

- Cleans new systems in an hour
- Suitable for mixed metal and plastic systems
- Restores system efficiency



**INP0313**

**CLEANER OWN BRAND 500ML**

- Cleans new systems in an hour
- Suitable for mixed metal and plastic systems
- Restores system efficiency



**INP0081**  
**SILENCER OWN BRAND 1 LTR**  

- Prevents corrosion and limescale
- Suitable for mixed metal and plastic systems
- Can be left in the system



**INP0314**  
**SILENCER OWN BRAND 500ML**  

- Prevents corrosion and limescale
- Suitable for mixed metal and plastic systems
- Can be left in the system



**INP0082**  
**LEAK SEALER OWN BRAND 1 LTR**  

- Seals inaccessible joints from weeping and leaking
- Sets within 12-24 hours
- Suitable for use with inhibitor



**INP0315**  
**LEAK SEALER OWN BRAND 500ML**  

- Seals inaccessible joints from weeping and leaking
- Sets within 12-24 hours
- Suitable for use with inhibitor



**INP0305**  
**LEAK DETECTION SPRAY 300ML**  

- Concentrated and powerful spray
- Uses approved chemical mixture
- Quick and efficient application



**INP0027**  
**CO ALARM 7 YEAR LIFE**  

- Easy to use and reliable carbon monoxide alarm
- Ideal for domestic and mobile environments
- 7 year operation under normal conditions



**7211366**  
**SHUT DOWN CONTROL BOC**  

- Easy wireless setup
- Simple single tool installation
- Status indicators and test button
- Fits any boiler using switched live



**7211367** - to be used with 7211366  
**VOID BOX**  

- Easy wireless setup
- Simple single tool installation
- Status indicators and test button
- 7 year battery life



**7211368** - to be used with 7211366  
**ROOM SENSOR**  

- Easy wireless setup
- Simple single tool installation
- Status indicators and test button
- 7 year battery life



**7211472**  
**EP 1**  

- 230V Single Channel for heating only
- 24hr, 5/2 day & 7 day settings
- Advance & extend functions
- Clear user display with blue backlight
- Simple, cost effective install - replace existing EP



**7211473**  
**EP 2**  

- 230V Two channels for heating & hot water
- 24hr, 5/2 day & 7 day settings
- Advance & extend functions
- Clear user display with blue backlight
- Simple, cost effective install - replace existing EP



**7210693**  
**EXPANSION VESSEL 8L**  

- Maximum working pressure of 10bar
- 3/4" hydraulic connection
- Air valve for re-charging



**7210694**  
**EXPANSION VESSEL 12L**  

- Maximum working pressure of 10bar
- 3/4" hydraulic connection
- Air valve for re-charging



**7210823**  
**EXPANSION VESSEL 8L WITH BRACKET**  

- Maximum working pressure of 10bar
- 3/4" hydraulic connection
- Air valve for re-charging



**7210824**  
**EXPANSION VESSEL 12L WITH BRACKET**  

- Maximum working pressure of 10bar
- 3/4" hydraulic connection
- Air valve for re-charging



## INTRODUCTORY OFFERS



### 7211472

#### EP1 SINGLE CHANNEL PROGRAMMER

- 230V Single Channel for heating only
- 24hr, 5/2 day & 7 day settings
- Advance & extend functions
- Clear user display with blue backlight
- Simple, cost effective install - replace existing EP



### 7211473

#### EP2 TWIN CHANNEL PROGRAMMER

- 230V Two channels for heating & hot water
- 24hr, 5/2 day & 7 day settings
- Advance & extend functions
- Clear user display with blue backlight
- Simple, cost effective install - replace existing EP

# POTTERTON

The new controllers have been designed to allow the installer to use the existing EP backplate which facilitates a quick and neat replacement for an existing controller without the need for any additional wiring.

The two new EP models are available in either Single Channel (for heating control) or Twin Channel (for heating and hot water timing). Each new programmer can be configured to replicate the function of the unit it replaces as shown below.

VERSION	PRODUCT NAME	FUNCTION	PART No.
NEW	EP1	24Hr, 5/2 Day or 7 day timer - Single Channel	7211472
REPLACES	EP4000	24 Hour Timer	900137
	EP4002	5/2 Day Timer	900136
	EP5002	7 Day Timer	900134

VERSION	PRODUCT NAME	FUNCTION	PART No.
NEW	EP2	24Hr, 5/2 Day or 7 day timer - Twin Channel	7211473
REPLACES	EP2000	24 Hour Timer	900138
	EP2002	5/2 Day Timer	900135
	EP3002	7 Day Timer	900131
	EP6002	7 Day Indirect Timer	900117

# Central Heating Controls





**INP0223**  
CLASSIC TRV WHITE 15MM ANG

- 15mm Bi directional angle
- Tested to 10bar pressure
- Liquid filled sensing head
- Complies to EN 215



**INP0224**  
PREM TRV WHT 15MM ANG

- 15mm Bi directional angle
- Tested to 10bar pressure
- Positive off, Liquid filled sensing head
- Maximum operating temp 120c
- Complies to EN 215



**INP0225**  
PREM TRV WHT 15MM ANG IE ONLY

- 14.7mm (Imperial size olive) Bi directional angled
- Positive off, Liquid filled sensing head
- Maximum operating temp 120c
- Tested to 10bar pressure
- Complies to EN 215



**INP0260**  
DIGISTAT AND RF601

- Easy dial adjustment
- 1 degree temperature settings set back feature
- Audible click of dial when setting



**INP0261**  
DIGISTAT 3

- Programmable room thermostat giving 5/2 day or 7 day control
- Easy to install
- Large customer friendly screen
- Compatible with combi boilers, electric boilers, underfloorheating and zone control



**INP0263**  
LP711 PROGRAMMER

- Suitable for combi boilers or single zone control
- 7 day time control, 3 timing periods per day
- Backlit screen, pre set clock and volt free contact switching



**INP0268**  
CYLINDER THERMOSTAT

- Recommended setting 60c - 65c
- Incorporates positive on/off for tests
- Perfect control for domestic stored hot water



**INP0288**  
ELECTRONIC PROGRAMMER

- 6 Day Digital Dual Channel Programmer



**RWB2**  
PROGRAMMER

- 24 hour time switch
- Suitable for gravity fed and pumped systems



**ST699B1002**  
TIME CONTROL

- 24 Hour Digital Dual Channel Programmer



**T6360B1028**  
ROOM STAT 240V

- Mechanical wired room thermostat



**247206**  
KIT-TIMER-ELEC/MECH 24 HOUR

- Combi Mechanical Time Switch
- 24 Hour
- Operates on 240V AC



**247207**  
KIT-TIMER-ELECTRONIC 7 DAY

- Combi Electronic Time Switch
- 7 Day
- Operates on 240V AC



**5100583**  
PRT100ST2 ROOM THERMOSTAT

- Wired SPST Potterton Room Thermostat. Operates between 5-30°C



**5117391**  
BAXI RF COMBI STAT KIT

- Single channel
- 24 hour programming options



**5117392**  
POTTERTON RF COMBI STAT KIT

- Single channel
- 24 hour programming options



**5117393**  
MAIN RF COMBI STAT KIT

- Single channel
- 24 hour programming options



**7211472**  
POTTERTON EP SERIES 1

- 230V Single Channel for heating only
- 24hr, 5/2 day & 7 day settings
- Advance & extend functions
- Clear user display with blue backlight
- Simple, cost effective install - replace existing EP





**7211473**

**POTTERTON EP SERIES 2**

- 230V Two channels for heating & hot water
- 24hr, 5/2 day & 7 day settings
- Advance & extend functions
- Clear user display with blue backlight
- Simple, cost effective install – replace existing EP



**900136**

**EP4002 FINAL ASSEMBLY  
(5 / 2 DAY TIMER)**

- Potterton EP4002 5/2 Day Programmer



**works** is Baxi's online loyalty scheme for Gas Safe registered installers.

The top 5 benefits of **works**

**REWARDS**  
You can use your Business Points to redeem against 1000s of rewards in the online catalogue.

**FREE GAS SAFE NOTIFICATION**  
You can register a boiler for Gas Safe at the same time as you are registering for Business Points, free of charge!

**PRIORITY CALL OUT**  
As a member of works, you'll have priority call out with Baxi Customer Support.

**ANNUAL SERVICE REMINDER**  
We'll send an annual service reminder to your customers on your behalf, generating more business for you.

**FIND AN INSTALLER**  
As a member of works you can have your business listed on Baxi's Find an Installer and receive leads from customers in your area.

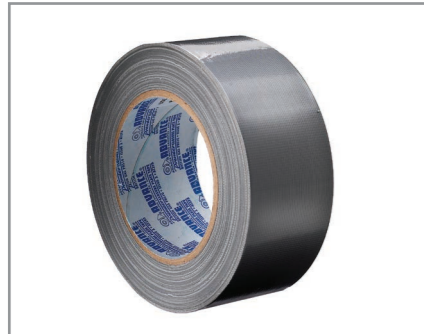
To find out more.

 [works2gether.co.uk](http://works2gether.co.uk)

 **0345 605 4370**

Consumables





**INP0001**  
PRS10 TAPE (50MM X 25M)

- High/low temperature resistance
- Flexible and strong
- Water resistant finish



**INP0002**  
ROCOL LEAK DETECTOR SPRAY

- Rapid detection of positive pressure gas leaks
- Compatible with plastic and copper pipe



**INP0013**  
GAS SEAL 300G

- Non setting pipe sealant for metallic threaded joints



**INP0014**  
OIL SEAL 300G

- A thixotropic liquid which is hard setting to form pressure tight seals



**INP0015**  
GAS TAP LUBRICANT 50G

- Suitable for temperatures up to 120°C.
- Excellent anti-wear and anti-seize properties



**INP0016**  
SAPPHIRE AQUA-SIL 85G

- Approved for use with potable water.
- Designed for the lubrication of slow speed bearings, slides and similar applications
- Available in 85g, 500g & 5kg



**INP0017**  
AIR DUSTER 300ML

- Supplied with directional tube.
- 360° Spray valve.
- Non-Flammable



**INP0042**  
LS-X

- Combined external leak sealer and jointing compound combined
- WRAS approved product



**INP0043**  
LEAK FIX

- Emergency leak repair tape



**INP0044**  
HAWK WHITE

- Potable water joining compound
- (WRAS approved product)



**INP0045**  
WATER HAWK

- Potable water joining compound
- WRAS approved product



**INP0046**  
SOLAR S1 10LTR

- Ready-to-use inhibited heat transfer fluid for solar thermal applications



**INP0047**  
HP-5 20LTR

- Ready-to-use heat transfer fluid
- Suitable for Air Source Heat Pumps and underfloor heating



**INP0052**  
SHOCK RELEASE SPRAY 400ML

- Food grade release and dismantling lubricant
- Shock freeze action
- Low odour



**INP0054**  
FOLIAC MANGANESE 400G

- Suitable for pipes, flanges and face joints
- Dark grey



**INP0055**  
FUELSEAL 375G

- Hard setting pipe jointing
- Suitable for high pressures and sealing of threads and face connections



**INP0083**  
FOAM CLEANER 400ML

- Fast acting foaming cleaner
- Safe for use on most plastics rubbers and painted surfaces
- Free from solvents
- NSF A1 registered

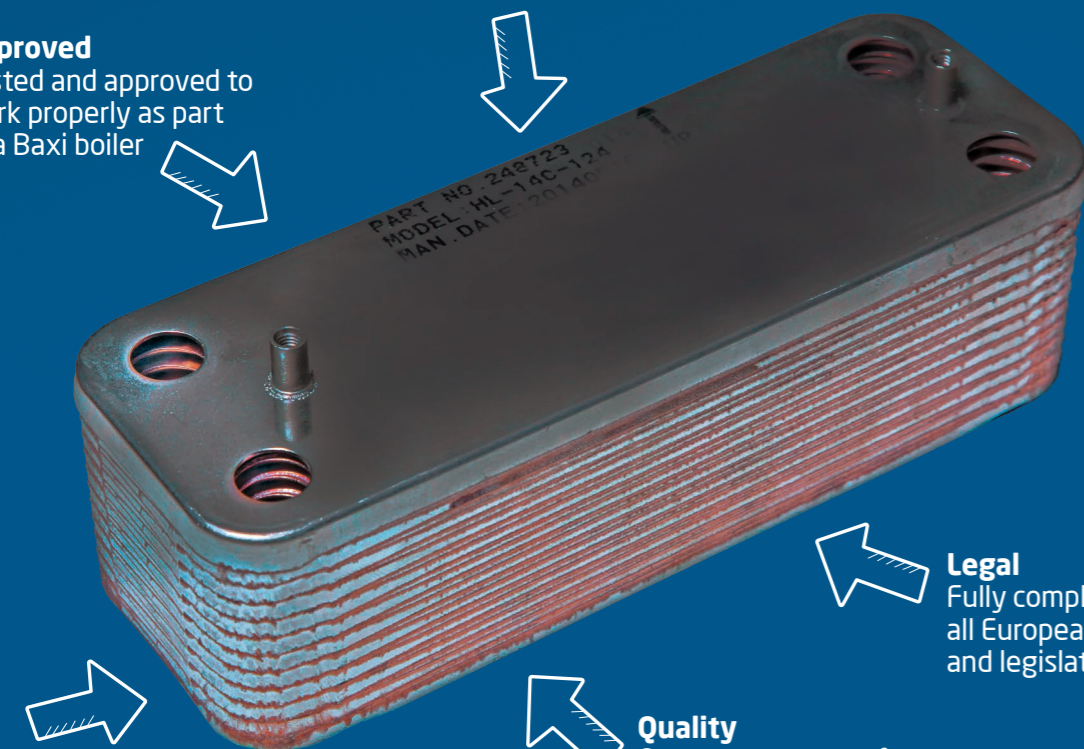


**INP0084**  
HEAVY DUTY CLEANER SPRAY 300ML

- Heavy duty, water emulsifiable cleaner.
- Solvent based cleaner suitable for use
- Safe on metal, paint and most plastics

**Approved**  
Tested and approved to work properly as part of a Baxi boiler

**Reliable**  
Designed to work better and for longer



**Safe**  
All parts have to meet our rigorous standards - safer for you and your customers

**Quality**  
One year warranty for added peace of mind

**Legal**  
Fully compliant with all European standards and legislation

# The difference

Baxi genuine parts are tested to meet rigorous quality standards, making them safe, reliable and legal.

Always ask for Baxi Genuine Parts.



**BAXI**  
Genuine Parts

**BAXI**  
Genuine Parts

**CONSUMABLES**



**INP0085**

**DE-ICER (300ML)**

- Fast-acting de-icer aerosol



**INP0092**

**LEAK DETECTOR SPRAY INVERTIBLE**

- Operational to -30°C.
- Contains fluorescent dye for high visibility of leaks



**INP0093**

**SMOKE MATCHES BOX OF 12**

- For spillage testing gas appliances.
- Handy toolbox size.
- 20 second burn time
- 2 m³ of smoke



**INP0094**

**SMOKE PELLETS 5GM**

- 30 second burn time,
- 7 m³ of smoke



**INP0095**

**SMOKE PELLETS 13GM**

- 40 second burn time.
- 18 m³ of smoke



**INP0096**

**SMOKE PELLETS ENC 8 GM**

- 59 second burn time
- 24 m³ of smoke



**INP0215**

**PIPESEAL PTFE LIQUID 300G**

- Sealant for metallic threaded pipes
- Designed for air, water and steam.
- Can be used in the place of PTFE tape
- Suitable for pressures up to 28 bar (400psi),
- Resists thermal
- -50°C to +250°C



**INP0217**

**FOLIAC FLANGE SEAL 50ML**

- Slow curing thread sealant
- Suitable for use with natural gas and LPG pipework



**INP0220**

**TWINEFLON 175M**

- Patented pipe thread sealant.
- 100% polytetrafluoroethylene (PTFE).
- Suitable for metal & plastic threaded pipe.
- Approved to all the latest regulations
- Suitable for potable water, natural gas and LPG systems



**INP0276**  
SOLAR CLEANER C

- Concentrated cleaner for all solar systems
- Domestic water Treatment Association Approved



**INP0277**  
DS40 SYSTEM CLEANER

- Descaler and cleaner for central heating systems



**INP0291**  
FLUES IN VOIDS PAD

- 50 pages per pad
- 3 ply pages
- No Carbon sheet required
- Copies for Landlord/Agent/Homeowner, engineer and tenant records



**INP0292**  
GAS SAFETY INSPECTION REP PAD

- 50 pages per pad
- 2 ply pages (Copy for Customer and Engineer Records)
- No Carbon sheet required



**INP0293**  
MAINTENANCE/SERVICE CHECK PAD

- 50 pages per pad
- 2 ply pages (Copy for Customer and Engineer Records)
- No Carbon sheet required



**INP0294**  
LANDLORD GAS SAFETY RECORD PAD

- 50 pages per pad
- 3 ply pages
- No carbon sheet
- Copies for Landlord/Agent/Homeowner, engineer and tenant records



**INP0295**  
WARNING/ADVICE NOTICE REP PAD

- 50 pages per pad
- 2 ply pages (Copy for Customer and Engineer Records)
- No Carbon sheet required



**INP0296**  
BLUE PAPER TOWEL

- Highly absorbent, 2 ply
- Each sheet 400mm by 250mm
- 100 sheets per roll



**INP0301**  
CLEAR SILICONE TUBING 1 X 2M

- 2 metre length
- 4mm internal diameter



**INP0302**  
RED RUBBER TUBE 1 X 18M

- 18 metre length
- 6.5mm internal diameter
- Suitable for use with Natural Gas



**INP0303**  
DRAIN DOWN HOSE KIT

- 10 metre length
- 1/2" internal diameter
- 3/4" outer diameter



**INP0305**  
LEAK DETECTION SPRAY 300ML

- Concentrated and powerful spray
- Uses approved chemical mixture
- Quick and efficient application



**INP0307**  
AIR DUSTER 200ML

- Supplied with directional tube
- Non flammable
- Max. Storage Temp 50°C



**INP0308**  
WARNING STICKER-DANGEROUS X 10

- Pack of 10
- 10cm by 7cm
- Clear colour and text



**INP0309**  
SMOKE MATCHES (TUB OF 75)

- 20 second burn time
- 75 matches per tub
- Produces 1.4 cubic metres of smoke
- Strike material fixed to tub



**REGS15**  
FUMAX SMOKE PELLETS PACK OF 10

- Approximately 30 seconds burn time
- Approximately 5m3 of white smoke



**REGS25**  
FUMAX KS TUB OF 10 SMOKE PELLETS

- Approximately 60 seconds burn time
- Approximately 15m3 of white smoke



**REGZ20**  
HEAT SINK COMPOUND 25G TUBE

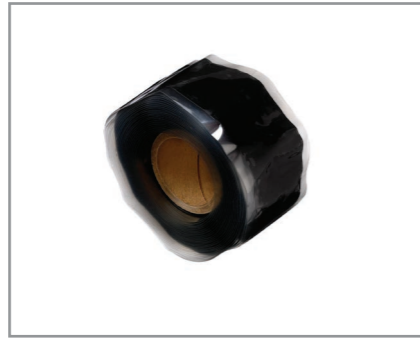
- A high temperature silicone compound used to create a positive heat sink seal



**REGZ40**

SILICONE GREASE 50G WRC APPRO

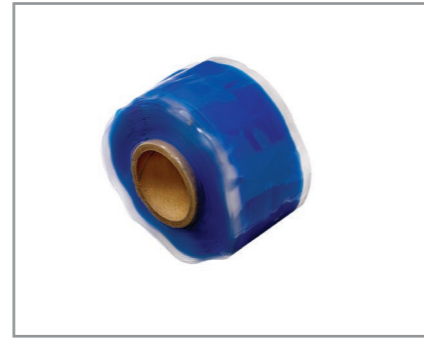
- WRC Approved 50g Tube



**RT25-BK**

RESCUE TAPE BLACK

- Self fusing
- Waterproof
- Pressure resistant up to 8 bar
- Insulates up to 8000 volts



**RT25-BL**

RESCUE TAPE BLUE

- Self fusing
- Waterproof
- Pressure resistant up to 8 bar
- Insulates up to 8000 volts



**RT25-CL**

RESCUE TAPE CLEAR

- Self fusing
- Waterproof
- Pressure resistant up to 8 bar
- Insulates up to 8000 volts



**RT25-RD**

RESCUE TAPE RED

- Self fusing
- Waterproof
- Pressure resistant up to 8 bar
- Insulates up to 8000 volts

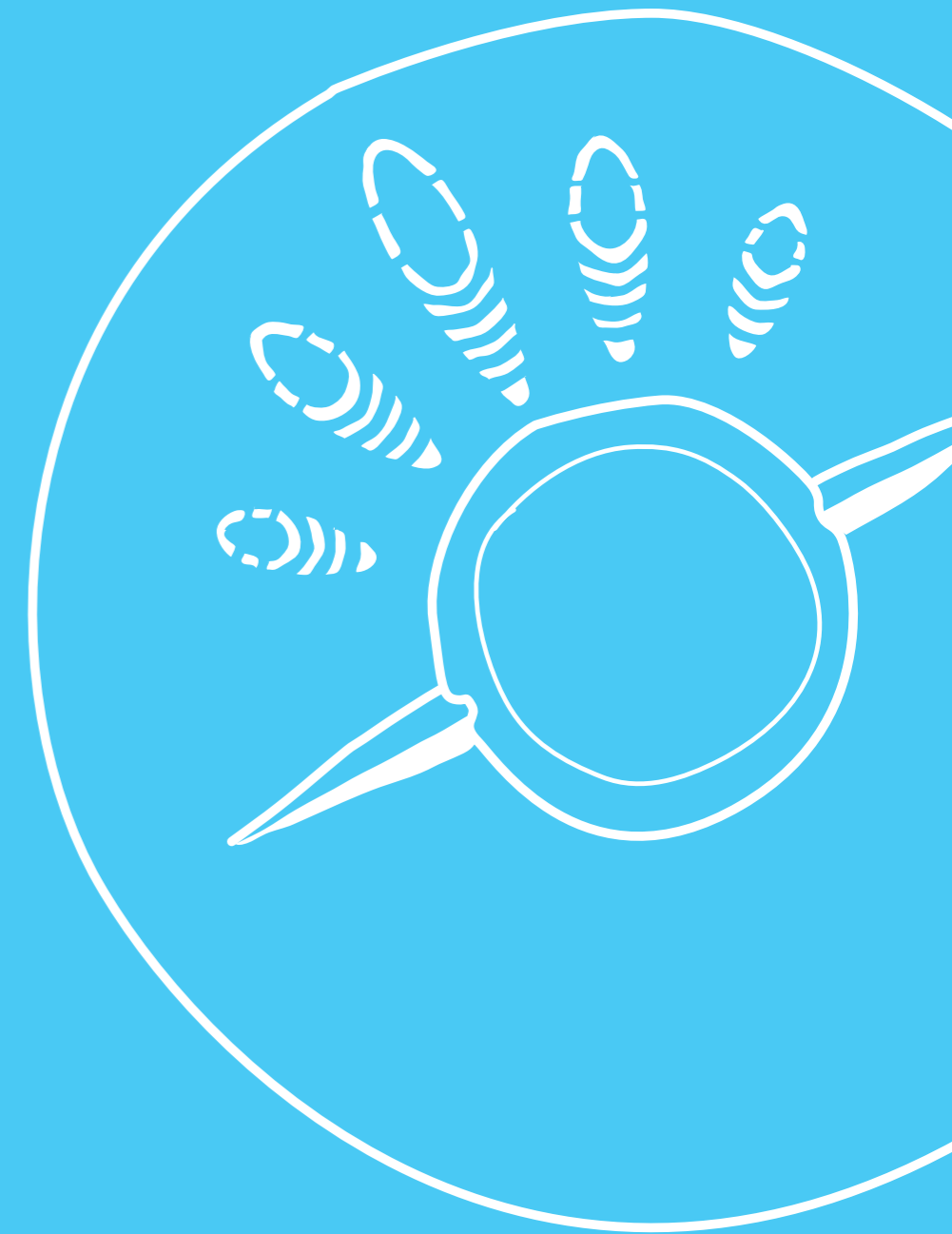


**9302379**

COAL TOUCH UP (SPRAY)

- Refractory spray coating to revive and renew all types of gas coals

# Detectors and alarms



## Hands-on training, delivered by experts

**BAXI**  
Make it easy

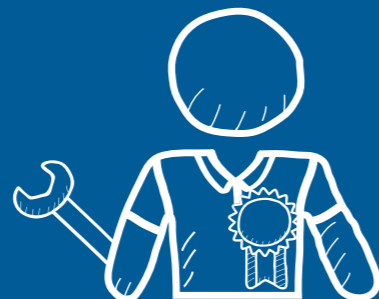
To book training call our training  
booking line or visit our website



08456 007 402



baxi.co.uk





**INP0027**  
CO ALARM 7 YEAR LIFE

- Easy to use, reliable carbon monoxide alarm
- Ideal for domestic and mobile environments
- Internal power pack guarantees 7 year operation under normal conditions



**INP0100**  
CO DETECTOR (SF450)

- Easy to use and reliable carbon monoxide alarm
- Ideal for domestic and mobile environments
- 6 year operation



**INP0316**  
CO ALARM 10 YEAR LIFE

- Easy to use and reliable carbon monoxide alarm
- Ideal for domestic and mobile environments
- 10 year operation
- Wall fixings included



**7211366**  
BAXI CO SHUTDOWN CONTROL BOX

- Easy wireless setup
- Simple single tool installation
- Status indicators and test button
- Fits any boiler using switched live



**7211367**  
BAXI VOID CO SENSOR

- Easy wireless setup
- Simple single tool installation
- Status indicators and test button
- 7 year battery life



**7211368**  
BAXI ROOM CO SENSOR

- Easy wireless setup
- Simple single tool installation
- Status indicators and test button
- 7 year battery life

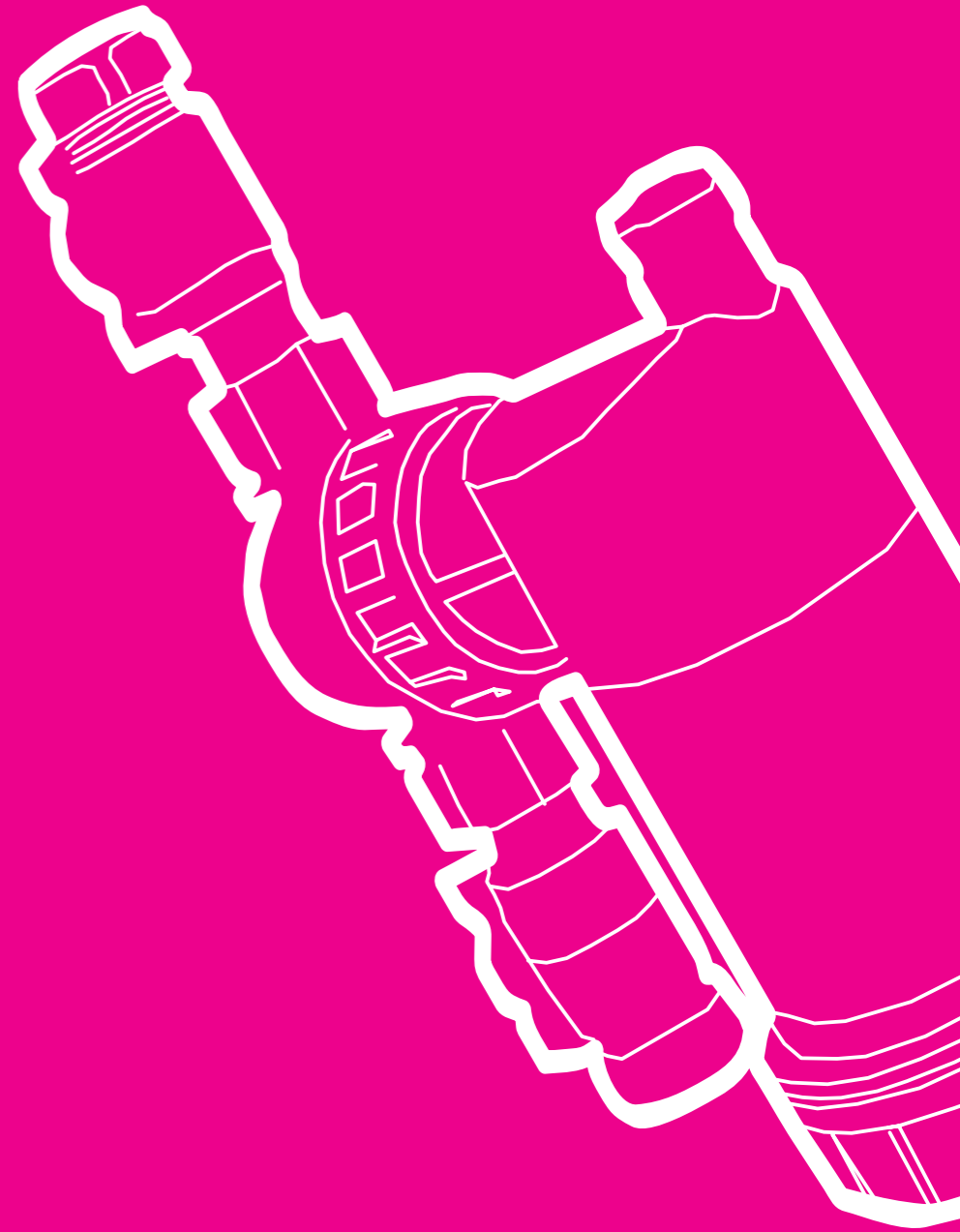


**7211998**  
CARBON MONOXIDE DETECTOR C09B

- Easy to use and reliable carbon monoxide alarm
- Ideal for domestic and mobile environments
- 1 year Battery Life
- Wall fixings included



Filters





**INP0056**

**BOILER BUDDY**

- In-line, cleanable, magnetic filter
- Removes magnetite, rust and debris to sub-micron level



**INP0077**

**TF1 FILTER - 22MM**

- Hydrocyclonic and magnetic, cleanable, in-line filter



**INP0078**

**TF1 FILTER - 28MM**

- Hydrocyclonic and magnetic, cleanable, in-line filter



**INP0199**

**INTERPART MAGNETIC FILTER 22MM**

- Standard 22mm hydraulic connections
- Magnetic filter sheath
- Supplied with 2 isolation valves
- Installation and service manual included
- Supplied with associated seals for fitting



**INP0274**

**TF1 INSTALLERS PACK 22MM**

- Contains TF1 filter, and F5 Express Cleaner and Protector



**INP0275**

**TF1 INSTALLERS PACK 28MM**

- Contains TF1 filter, and F5 Express Cleaner and Protector



**INP0310**

**INTERPART MAGNETIC FILTER 28MM**

- Standard 28mm hydraulic connections
- Magnetic filter sheath
- Supplied with 2 isolation valves
- Supplied with associated seals for fitting



**5135210**

**MAGNACLEAN PROFESSIONAL 22MM**

- A high efficiency, cleanable, full-flow magnetic filter
- Suitable for all wet central heating systems.
- Removes virtually 100% of suspended black iron oxide



**5135211**

**MAGNACLEAN TWINTECH 22MM**

- Proven technology
- Powerful magnetic and non-magnetic filtration characteristics

Are you  
ErP ready?

interpart



Introducing the NEW  
Interpart A-Class High  
Efficiency ErP ready  
Central Heating Pumps.

- Available in 5m and 6m
- Quick fit electrical connection
- Low power consumption
- British Standards Institute approved
- Developed by Baxi
- 2 year warranty

**INP0117**  
HIGH EFFICIENCY 5M PUMP ASSY

**INP0118**  
HIGH EFFICIENCY 6M PUMP ASSY

# Counterfeit parts cost more than you think.

**BAXI**  
Genuine Parts



Parts that are not supplied by the manufacturer, or have been refurbished, are not approved for use in boilers and do not carry the right quality certification.

Counterfeit parts can have serious safety implications for the end user. They can affect the reliability of the boiler.

Ultimately, using counterfeit parts could damage your reputation and may lead to prosecution.

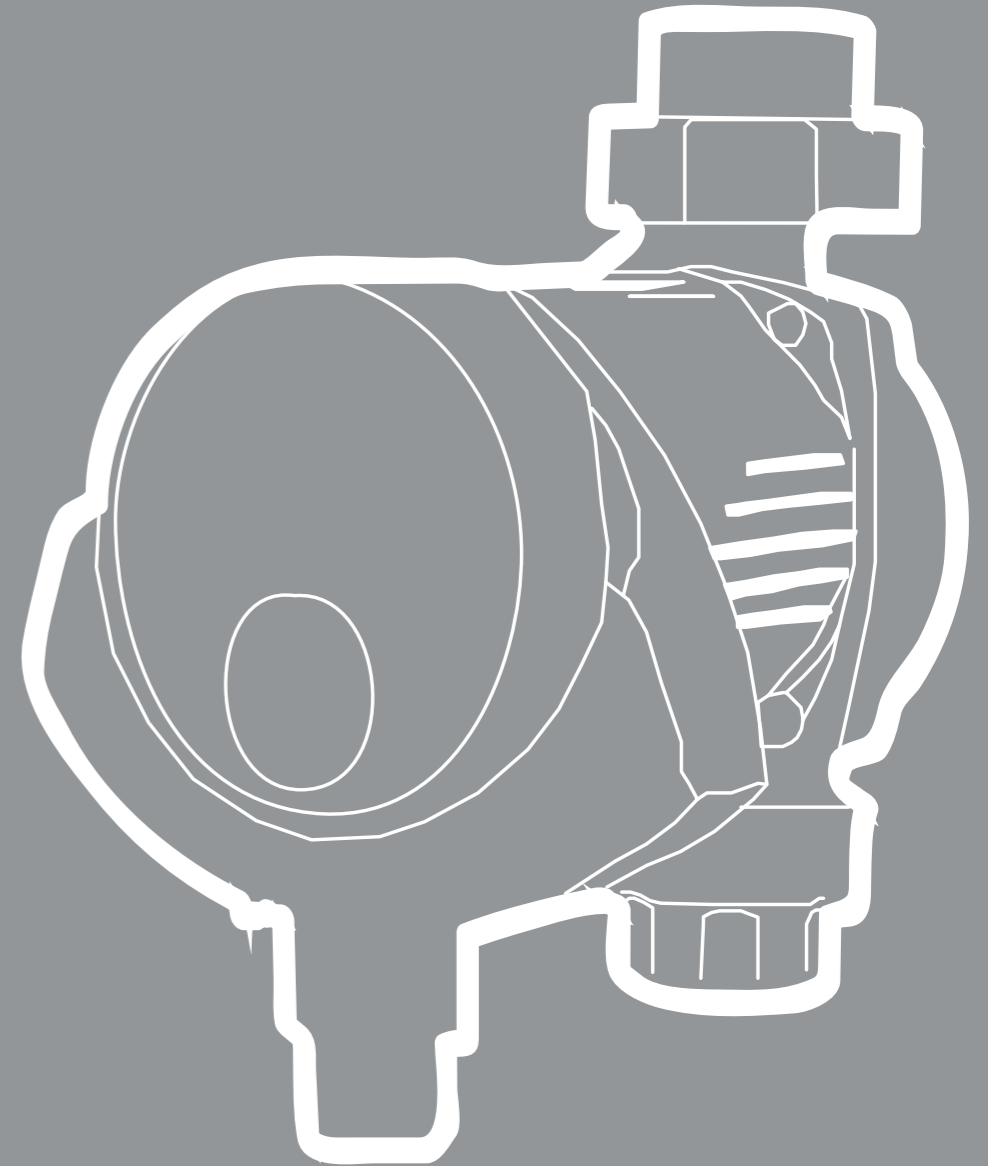
**Always ask for Baxi Genuine Parts.**

Baxi Genuine Parts are only available through our network of approved stockists. Find your nearest stockist at [www.baxigenuineparts.co.uk](http://www.baxigenuineparts.co.uk)

If you have any questions or concerns about genuine parts, please contact our knowledgeable team on **0844 871 1540**



Pumps



**BAXI**  
Genuine Parts





**INP0117**

**HIGH EFFICIENCY 5M PUMP ASSY**

- ErP ready 5m Pump
- 2015 Regulation Ready (EEI<0.23)
- Low Power Consumption
- Standard 1½" Hydraulic fixings



**INP0118**

**HIGH EFFICIENCY 6M PUMP ASSY**

- ErP ready 6m Pump
- 2015 Regulation Ready (EEI<0.23)
- Low Power Consumption
- Standard 1½" Hydraulic fixings



**works** is Baxi's online loyalty scheme for Gas Safe registered installers.

The top 5 benefits of **works**

**REWARDS**  
You can use your Business Points to redeem against 1000s of rewards in the online catalogue.

**FREE GAS SAFE NOTIFICATION**  
You can register a boiler for Gas Safe at the same time as you are registering for Business Points, free of charge!

**PRIORITY CALL OUT**  
As a member of works, you'll have priority call out with Baxi Customer Support.

**ANNUAL SERVICE REMINDER**  
We'll send an annual service reminder to your customers on your behalf, generating more business for you.

**FIND AN INSTALLER**  
As a member of works you can have your business listed on Baxi's Find an Installer and receive leads from customers in your area.

To find out more.

 [works2gether.co.uk](http://works2gether.co.uk)

 **0345 605 4370**

# Tools and equipment





**F112**  
BOX SPANNER

- 86mm capacity



**INP0061**  
MANUAL RADIATOR VALVE 15MM

- 15mm angled
- Allows control of the water flow into radiators to be manually adjusted



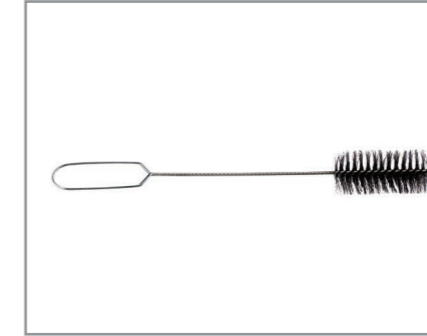
**INP0087**  
POLAR PROF FREEZER KIT CONTAINS

- A pair of 8 - 15mm freezing jackets
- A pair of 15 - 22mm freezing jackets
- Brass regulator valve, a pair of hoses
- Weighing scale, T-connector
- Canister of Polar Spray



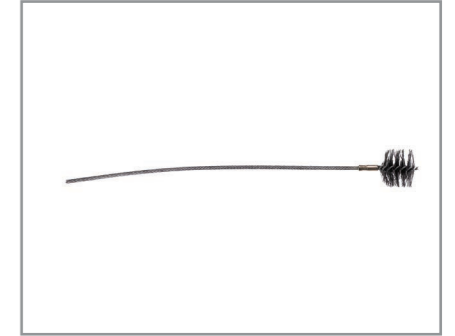
**TPSS28**  
KOPEX PIPE SLICE 28 MM

- Tailor made for professional and DIY use
- A quicker - cleaner and safer way to prepare copper pipe
- Dual purpose pipe cleaning and deburring tool



**200455**  
FLUE BRUSH

- 15" Flue Brush Fishtail



**212154**  
FLUE BRUSH

- Useful for cleaning soot from boiler flues



**INP0088**  
POLAR COM FREEZER KIT CONTAINS

- A pair of 8-15mm
- A pair of 15-22mm freezing jackets
- A pair of 28 - 35mm freezing jackets
- Brass regulator valve, a pair of hoses weighing scale, T-connector and a canister of Polar Spray



**INP0089**  
POLAR FREEZING SPRAY

- Contains 700g (580ml) refrigerant which is sufficient for 7 individual freezes on 15mm copper pipe
- Freezes pipes in as little as 90 seconds
- Ice plugs last up to 45 minutes



**TPPS15**  
KOPEX PIPE PREP 15 MM

- Tailor made for professional and DIY use
- A quicker - cleaner and safer way to prepare copper pipe
- Dual purpose pipe cleaning and deburring tool



**5107733**  
18" U GAUGE

- Dual Scale (0-44 mbar & 0-18" wg)



**5134844**  
U GAUGE 24"

- Measures from 2 to 25 L/min



**5116089**  
DUST SHEET 12'X9' COTTON TWILL

- Cotton, Reusable



**TPPS22**  
KOPEX PIPE PREP 22 MM

- Tailor made for professional and DIY use
- A quicker - cleaner and safer way to prepare copper pipe
- Dual purpose pipe cleaning and deburring tool



**TPSS15**  
KOPEX PIPE SLICE 15 MM

- Tailor-made for professional and DIY use
- Cuts clean through copper pipes - avoiding pipe damage and external deburring
- Ideal for confined spaces - especially where there is minimal pipe to wall clearance



**TPSS22**  
KOPEX PIPE SLICE 22 MM

- Tailor-made for professional and DIY use
- Cuts clean through copper pipes - avoiding pipe damage and external deburring
- Ideal for confined spaces - especially where there is minimal pipe to wall clearance



**5129604**  
CLAMP METER

- Measures up to 300A



**5129605**  
AUTORANGE INSULATOR RES TESTER

- Measures ACV, DCV & Resistance



**5129607**  
WATER PRESSURE TEST GAUGE

- Measures 0 to 11 Bar, (0 to 160 PSI)
- (0 to 1100 KPA)



**5134839**  
PIPE CUTTER FOR 6MM-28MM PIPE

- Tailor-made for professional and DIY use
- Cuts clean through copper pipes - avoiding pipe damage and external deburring



**5134840**  
PIPE BENDER FOR 15 & 22MM PIPE

- For 15 & 22mm copper tubes



**5134841**  
MINI PIPE BENDER - 8,10MM TUBE

- For 8 & 10mm copper tubes



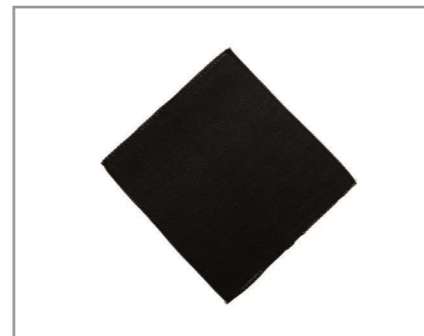
**5134842**  
RADIATOR ALLEN KEY

- Used for bleeding air out of systems



**5107734**  
FLOW CUP

- Measures to 24in.w.g or 60 mbar. on dual scale
- PVC 'U' tube
- Sliding scale for easy zero
- Suitable for Natural Gas and L.P.G. readings



**5134845**  
SOLDER MAT (ECONOMY)

- 25 cm x 25 cm
- Withstands temperatures of 600°C
- Economical DIY type mat



**5135151**  
S156 KNEE PADS BLACK (PR)

- Ergonomically design
- 100% moulded polythene



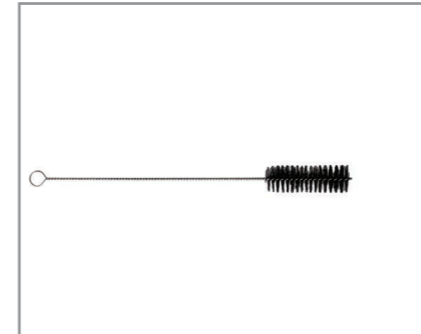
**5135191**  
5 POCKET TOOL & NAIL POUCH

- 5 tool pockets,
- 2 tool loops and 1 tape holder



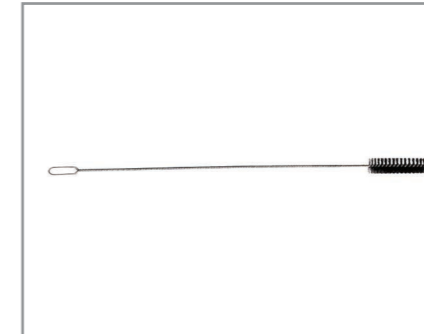
**5136248**  
PIPE CUTTER 3MM-22MM

- Tailor-made for professional and DIY use
- Cuts clean through copper pipes - avoiding pipe damage and external deburring



**595012**  
BRUSH FLUE 6'X 2'DIA X 24'LG

- 6'X 2'DIA X 24'LG



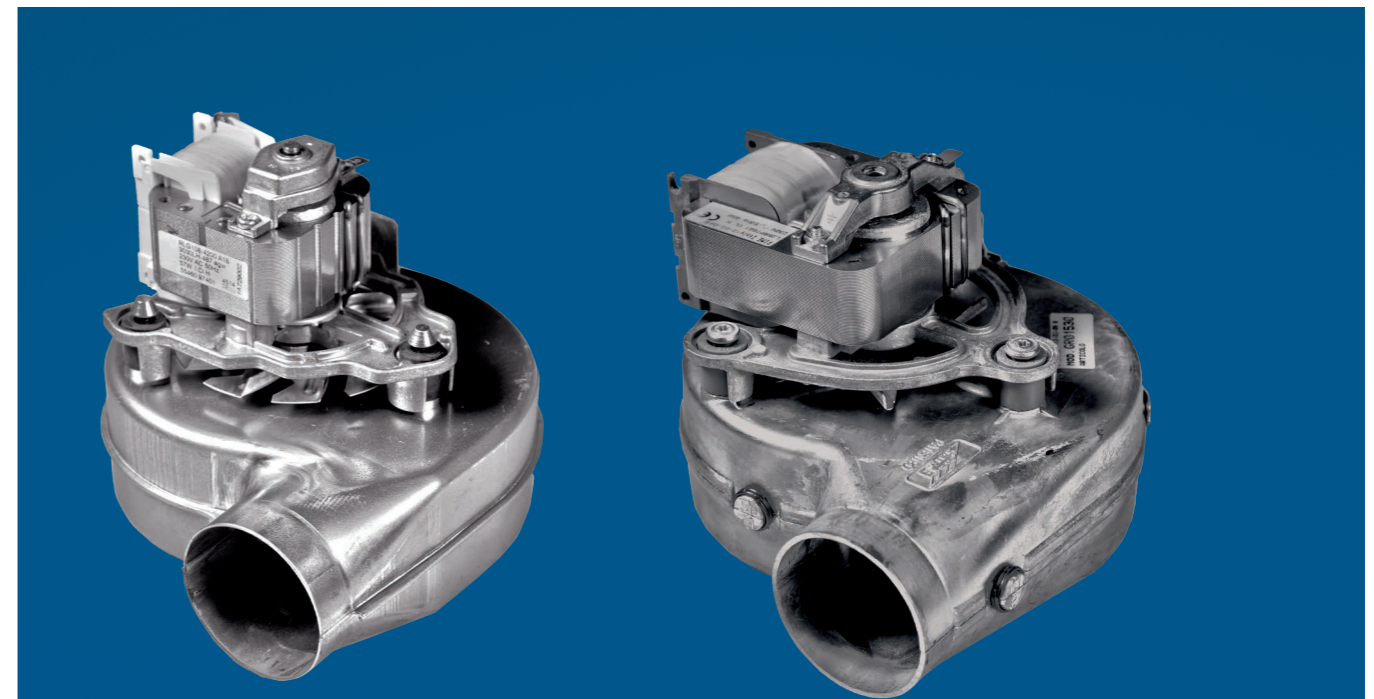
**595016**  
BRUSH FLUE 8'X 2'DIA X 51'LG

- 8'X 2'DIA X 51' LG



**907736**  
FLUE SCRAPER C/W HANDLE PRO 1

- Ideal for removing soot from flues



## Spot the difference

It may be difficult to identify a Baxi genuine part from a counterfeit at first sight.

However, Baxi genuine parts are tested to meet rigorous quality approvals making them safe, reliable and legal.

Just because a counterfeit boiler part looks the same, doesn't mean it is manufactured to the same standard. Counterfeit parts can be poor quality, unreliable and dangerous.

**Always ask for Baxi Genuine Parts.**



**BAXI**  
Genuine Parts

# Counterfeit parts cost more than you think.



Parts that are not supplied by the manufacturer, or have been refurbished, are not approved for use in boilers and do not carry the right quality certification.

Counterfeit parts can have serious safety implications for the end user. They can affect the reliability of the boiler.

Ultimately, using counterfeit parts could damage your reputation and may lead to prosecution.

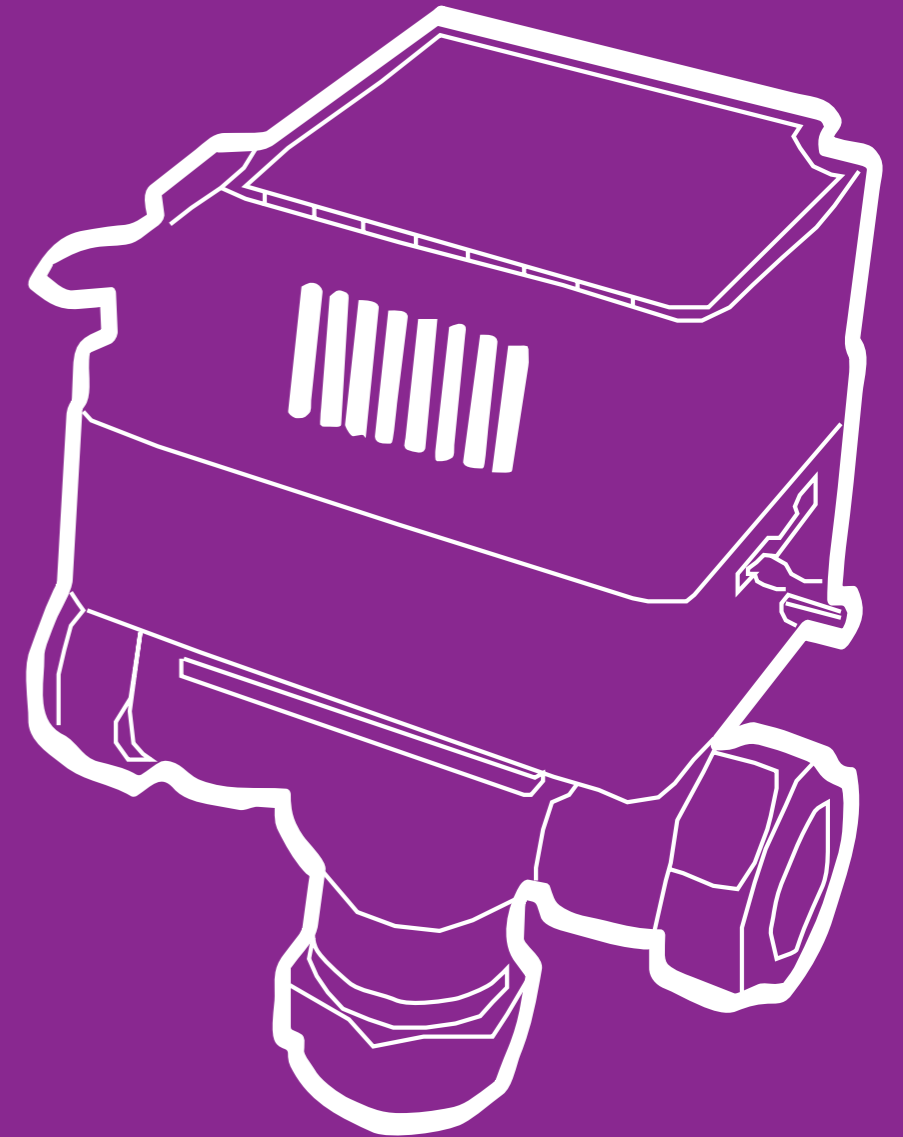
**Always ask for Baxi Genuine Parts.**

Baxi Genuine Parts are only available through our network of approved stockists. Find your nearest stockist at [www.baxigenuineparts.co.uk](http://www.baxigenuineparts.co.uk)

If you have any questions or concerns about genuine parts, please contact our knowledgeable team on **0844 871 1540**



Valves





**HPA2**  
2 PORT VALVE,ACTUATOR ONLY

- Two port valve actuator interchangeable with Landis & Gyr SK2, Pegler Sunvic SZ1301, SZ2301 and Potterton PMV1



**HSA3**  
3 PORT VALVE ACTUATOR ONLY

- Three port motorised valve actuator interchangeable with Landis & Gyr SK3, Pegler Sunvic SZ1701, SZ2701 and Potterton PMV2



**HSV3**  
3 WAY VALVE BODY

- Valve body for Danfoss actuator



**INP0063**  
BYPASS VALVE 22MM ANGLE

- Suitable for sealed and open vented systems
- Adjustable from 0.0 bar to 0.5 bar



**INP0064**  
BYPASS VALVE 22MM STRAIGHT

- Suitable for sealed and open vented systems
- Adjustable from 0.0 bar to 0.5 bar



**INP0065**  
BOILER PRESSURE RELIEF VALVE

- Male to Female 1/2" 3 Bar PRV



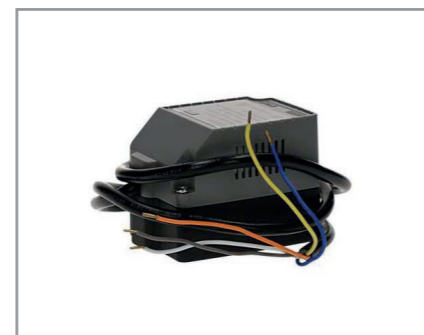
**INP0066**  
UNIVERSAL SUPERFIT T/COUPLE

- Works across most systems



**INP0104**  
ZONE ACTUATOR HD 5 W-E

- Zone actuator 5 wire & earth
- Vented plastic housing for supercool operation
- Like for like replacement for market leader



**INP0105**  
MID POS ACTUATOR HD 4 W-E

- Mid-Pos actuator 5 wire & earth
- Vented plastic housing for supercool operation
- Like for like replacement for market leader



**INP0108**  
ZONE VALVE ASS 22 MM 5 W-E

- Fits standard 22mm hydraulic systems
- Ball paddle design for improved sealing
- Vented plastic housing for supercool operation
- Like for like replacement for market leader



**INP0109**  
MID POS VALVE ASS 22 MM 4 W-E

- Fits standard 22mm hydraulic systems
- Ball paddle design for improved sealing
- Vented plastic housing for supercool operation
- Like for like replacement for market leader



**INP0112**  
ZONE VALVE ASSY 28MM 5 W&E

- Fits standard 28mm hydraulic systems
- Ball paddle design for improved sealing
- Vented plastic housing for supercool operation
- Like for like replacement for market leader



**INP0113**  
MID POS ASSY 28MM 5 W&E

- Fits standard 28mm hydraulic systems
- Ball paddle design for improved sealing
- Vented plastic housing for supercool operation
- Like for like replacement for market leader



**INP0210**  
T&P RELIEF VALVE 6 BAR

- Dual protection against high pressure and excessive temperatures
- Tested and certified to CE standards



**INP0269**  
BIOFLO CONTROL PACK 22MM

- Complete with LP522, RTS1, HTS3, 22mm 3 Port Mid Position Valve
- LWC1 Wiring Centre



**INP0270**  
TWINZONE CONTROL PACK 22MM

- Complete with LP522, RTS1, HTS3, 2 x 22mm 2 Port Valves
- LWC1 Wiring Centre



**MPE222**  
TWO PORT ZONE VALVE 22MM

- Controls either the central heating or hot water circuit
- Two valves used in combination will most fully pumped systems



**MPE322**  
THREE PORT MID POS VALVE 22MM

- Control both the central heating and hot water circuits simultaneously
- Operate directly by the system programmer or via room and cylinder thermostats



**MPE328**  
THREE PORT MID POS VALVE 28MM

- Control both the central heating and hot water circuits simultaneously
- Operate directly by the system programmer or via room and cylinder thermostats



**Q309A2788**  
HONEYWELL THERMOCOUPLE

- 36" capillary, Honeywell



**SD2701**  
ACTUATOR SD2701

- Actuator fits DT or EDT bodies



**SYNCHROMOTOR**

- Suitable for variety of motorised valves
- Complete with butt splices



**VR4700C4022**  
HONEYWELL GAS VALVE

- 240V



**V4043H1056**  
HONEYWELL ZONE VALVE 22MM

- Two port motorised valves
- Wide range of flow control applications



**V4043H1106**  
HONEYWELL 28MM ZONE VALVE 2 PORT

- Two port motorised valves
- Wide range of flow control applications



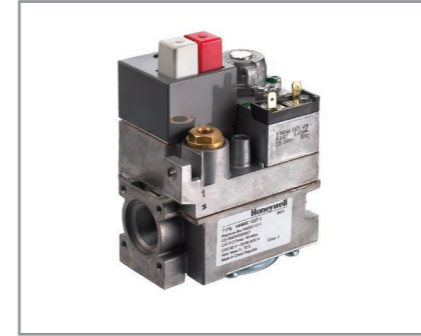
**V4073A1039**  
HONEYWELL THREE PORT MID POS VALVE 22MM

- Suitable for small bore domestic central heating systems, where both radiator and hot water cylinder circuits are pumped



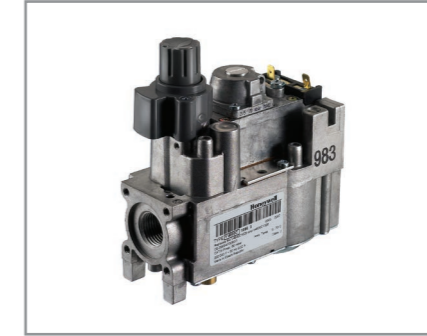
**V4073A1088**  
HONEYWELL THREE PORT MID POS VALVE 28MM

- Suitable for small bore domestic central heating systems, where both radiator and hot water cylinder circuits are pumped



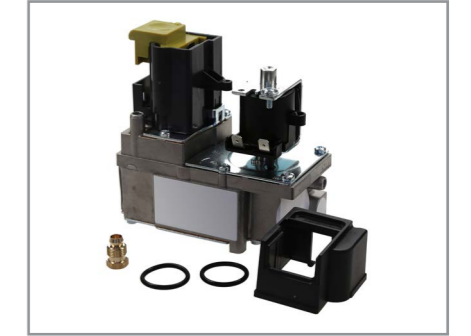
**V4400C1237**  
HONEYWELL GAS VALVE TRADELINE

- 240V 3/4"
- Red and White Push Button



**V4600C1086**  
HONEYWELL GAS VALVE TRADELINE

- Tradeline Gas Valve 240V 1/2"
- 2Grey Push Button



**V4700E1098**  
HONEYWELL GAS VALVE ASSY



**5111137**  
DIAPHRAGM REP KIT DWH (COMBI)

- Suitable for Combi 105HE, Performa 24-30HE, Main 24-30HE



**5111138**  
DIAPHRAGM REP KIT PRI (COMBI)

- Suitable for Combi 105HE, Performa 24-30HE, Main 24-30HE



**5111139**  
DIAPHRAGM REP KIT PRI (MAX/IN)

- Suitable for Combi 80-105HE, Performa 24i HE



**5111140**  
DIAPHRAGM REP KIT DWH (MAX/IN)

- Suitable for Combi 80-105HE, Performa 24i HE



**5111141**  
DIAPHRAGM REP KIT (SYSTEM)

- Suitable for Main 18-24HE, Performa System 12-28HE Plus

interpart



- NoCO void monitoring shut off system**
- Automatic safety shutdown
- Seven year battery life
- Easy to fit
- Two year warranty
- Manual test mode
- No need for hatches
- Great for landlords/new builds

**CO kills.  
Save and be safe.**

Water treatment



**BAXI**  
Genuine Parts



**INP0010**  
X100 CONCENTRATE

- Protects against scale and corrosion



**INP0011**  
X200 CONCENTRATE

- Eliminates limescale and boiler noise



**INP0012**  
X400 CONCENTRATE

- Cleans corrosion debris



**INP0020**  
X100 SENTINEL RAPID DOSE

- Suitable for domestic wet central heating systems
- Quick and easy



**INP0021**  
X200 SENTINEL RAPID DOSE

- Suitable for domestic wet central heating systems
- Quick and easy



**INP0022**  
X400 SENTINEL RAPID DOSE

- Suitable for domestic wet central heating systems
- Quick and easy



**INP0023**  
SENTINEL RAPID DOSE LEAK SEALER

- Suitable for domestic wet central heating systems
- Quick and easy



**INP0029**  
PROTECTOR F1 (LIQUID)

- Protects against corrosion and limescale
- Buildcert, KIWA & Belgaqua approved



**INP0030**  
PROTECTOR F1 EXPRESS (AEROSOL)

- Protects against corrosion and limescale
- Buildcert, KIWA & Belgaqua approved



**INP0031**  
SUPERCONCENTRATE PROTECTOR F1

- Protects against corrosion and limescale
- Buildcert, KIWA & Belgaqua approved



**INP0032**  
CLEANER F3 (LIQUID)

- Removes sludge, flux and debris from new and existing systems



**INP0033**  
SUPERCONCENTRATE CLEANER F3

- Removes sludge, flux and debris from new and existing systems



**INP0034**  
CLEANER F5 EXPRESS (AEROSOL)

- Removes sludge, flux and debris from new and heavily contaminated systems



**INP0035**  
POWERFLUSHING CLEANER F5

- Sludge remover for heavily contaminated systems
- Ideal for use during powerflushing



**INP0036**  
BOILER NOISE SILENCER F2

- Reduces boiler noise and improves heat transfer efficiency



**INP0037**  
NOISE SILENCER F2 EXPRESS

- Reduces boiler noise and improves heat transfer efficiency



**INP0038**  
SUPERCONCENTRATE SILENCER F2

- Reduces boiler noise and improves heat transfer efficiency



**INP0039**  
LEAK SEALER F4 (LIQUID)

- Internal leak sealer. Ideal for reducing pressure loss from sealed systems by sealing small leaks





**INP0024**  
RAPID DOSE FILL'G LOOP ADAPTOR

- Adapter used for converting a connection to allow dosing of chemicals into system



**INP0079**  
INTERPART INHIBITOR 1 LTR

- Suitable for mixed metal and plastic central heating systems
- Prevents corrosion and limescale
- BuildCert and WRAS approved



**INP0312**  
INTERPART INHIBITOR 500ML

- Suitable for mixed metal and plastic central heating systems
- Prevents corrosion and limescale
- BuildCert and WRAS approved



**INP0080**  
INTERPART CLEANER 1 LTR

- Suitable for mixed metal and plastic central heating systems
- Disperses sludge, limescale and other deposits



**INP0313**  
INTERPART CLEANER 500ML

- Suitable for mixed metal and plastic central heating systems
- Disperses sludge, limescale and other deposits



**INP0081**  
INTERPART SILENCER 1 LTR

- Restores heat efficiency and reduces boiler noise



**INP0314**  
INTERPART SILENCER 500ML

- Restores heat efficiency and reduces boiler noise



**INP0082**  
INTERPART LEAK SEALER 1 LTR

- Seals inaccessible leaks and weeping joints
- Helps reduce pressure loss in sealed systems



**INP0315**  
INTERPART LEAK SEALER 500ML

- Seals inaccessible leaks and weeping joints
- Helps reduce pressure loss in sealed systems



**INP0272**  
ENERGY SAVER F6

- Improves heat transfer efficiency
- DWTA approved



**INP0273**  
ALPHI 11-5 LITRE

- Contains corrosion and lime scale inhibitors



**X100**  
INHIBITOR 1 LITRE BOTTLE

- Multi-metal corrosion and scale inhibitor.



**X200**  
NOISE REDUCER 1 LITRE BOTTLE

- Non-acidic boiler noise reducer



**X300**  
PRE COMMISSION CLEANER 1 LITRE

- Universal cleanser for new systems and those up to 6 months



**X400**  
SLUDGE REMOVER 1 LITRE BOT

- Sludge remover for existing systems



**X800**  
JETFLO 1 LITRE BOTTLE

- Cleaning agent designed for use in conjunction with pumped flushing equipment and manual flushing



**INP0040**  
LEAK SEALER F4 EXPRESS

- Internal leak sealer. Ideal for reducing pressure loss from sealed systems by sealing small leaks



**INP0041**  
S-CONCENTRATE LEAK SEALER F4

- Internal leak sealer. Ideal for reducing pressure loss from sealed systems by sealing small leaks



**INP0048**  
SUPERCON. L/SCALE PREVENTER

- Prevents build-up of limescale throughout the home



**INP0050**  
ELECTROLYTIC SCALE REDUCER

- In-line scale reducer to prevent the build-up of scale using electrolytic principles



**INP0051**  
MAGNETIC SCALE REDUCER

- In-line scale reducer to prevent the build-up of scale using magnetic principles



**INP0279**  
FERNOX LIMESCALE REMOVER DS-3 - 2KG

- Limescale remover for domestic appliances



**INP0280**  
FERNOX SYSTEM HEALTH CHECK

- Postal laboratory water testing service
- Contains sample bottles for mains water and central heating water
- Reply paid envelope



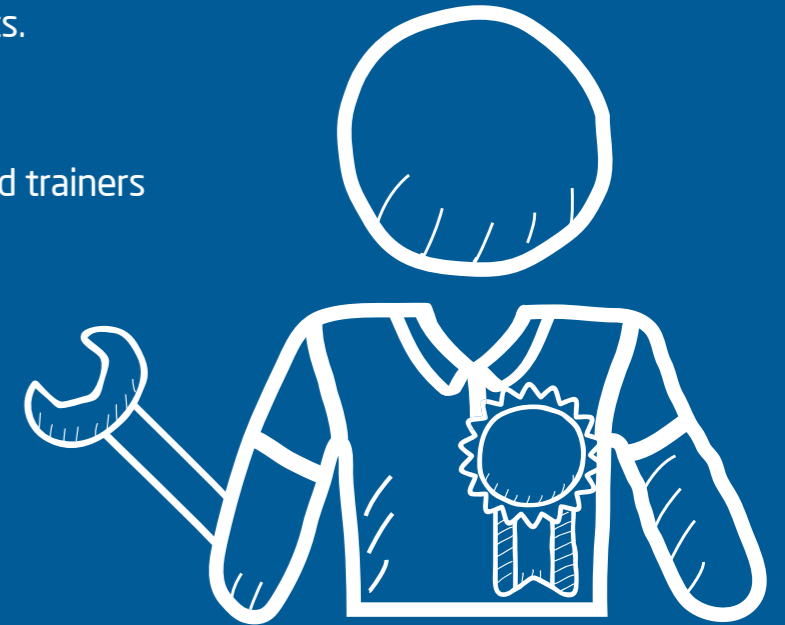
**5119544**  
HEAT TRANSFER FLUID 10 LITRES

- Premixed water/glycol solution protects to -21°C

# Hands-on training, delivered by experts

We have training centres all across the country to make it easier for you to attend. They are all fully equipped with hands-on bays, where you can train in a safe environment on all our products.

- free product training
- free Nest Pro training
- courses delivered by qualified trainers
- practical, hands-on training



To book training call our training booking line or visit our website



08456 007 402



[baxi.co.uk](http://baxi.co.uk)



INTERPART RANGE		Page
INP0108	ZONE VALVE ASS 22 MM 5 W-E	10
INP0109	MID POS VALVE ASS 22 MM 4 W-E	10
INP0112	ZONE VALVE ASSY 28MM 5 W&E	10
INP0113	MID POS ASSY 28MM 5 W&E	10
INP0199	INTERPART MAGNETIC FILTER 22MM	10
INP0310	INTERPART MAGNETIC FILTER 28MM	10
INP0117	HIGH EFFICIENCY 5M PUMP ASSY	10
INP0118	HIGH EFFICIENCY 6M PUMP ASSY	10
INP0296	BLUE PAPER TOWEL	10
INP0291	FLUES IN VOIDS PAD	11
INP0292	GAS SAFETY INSPECTION REP PAD	11
INP0293	MAINTENANCE/SERVICE CHECK PAD	11
INP0294	LANDLORD GAS SAFETY RECORD PAD	11
INP0295	WARNING/ADVICE NOTICE REP PAD	11
INP0079	INHIBITOR OWN BRAND 1 LTR	11
INP0312	INHIBITOR OWN BRAND 500ML	11
INP0080	CLEANER OWN BRAND 1 LTR	11
INP0313	CLEANER OWN BRAND 500ML	11
INP0081	SILENCER OWN BRAND 1 LTR	12
INP0314	SILENCER OWN BRAND 500ML	12
INP0082	LEAK SEALER OWN BRAND 1 LTR	12
INP0315	LEAK SEALER OWN BRAND 500ML	12
INP0305	LEAK DETECTION SPRAY 300ML	12
INP0027	CO ALARM 7 YEAR LIFE	12
7211366	SHUT DOWN CONTROL BOC	12
7211367	VOID BOX	12
7211368	ROOM SENSOR	12
7211472	EP 1	13
7211473	EP 2	13
7210693	EXPANSION VESSEL 8L	13
7210694	EXPANSION VESSEL 12L	12
7210823	EXPANSION VESSEL 8L WITH BRACKET	12
7210824	EXPANSION VESSEL 12L WITH BRACKET	13

CENTRAL HEATING CONTROLS		Page
INP0223	CLASSIC TRV WHITE 15MM ANG	16
INP0224	PREM TRV WHT 15MM ANG	16
INP0225	PREM TRV WHT 15MM ANG IE ONLY	16
INP0260	DIGISTAT AND RF601	16
INP0261	DIGISTAT 3	16
INP0263	LP711 PROGRAMMER	16
INP0268	CYLINDER THERMOSTAT	16
INP0288	ELECTRONIC PROGRAMMER	16
RWB2	PROGRAMMER	16
ST69981002	TIME CONTROL	17
T6360B1028	ROOM STAT 240V	17
247206	KIT-TIMER-ELEC/MECH 24 HOUR	17
247207	KIT-TIMER-ELECTRONIC 7 DA	17
5100583	PRT100ST2 ROOM THERMOSTAT	17
5117391	BAXI RF COMBI STAT KIT	17
5117392	POT TERTON RF COMBI STAT KIT	17
5117393	MAIN RF COMBI STAT KIT	17
7211472	POT TERTON EP SERIES 1	17
7211473	POT TERTON EP SERIES 2	18
900136	EP4002 FINAL ASSEMBLY (5/2 DAY TIMER)	18

CONSUMABLES		Page
INP0001	PRS10 TAPE (50MM X 25M)	20
INP0002	ROCOL LEAK DETECTOR SPRAY	20
INP0013	GAS SEAL 300G	20
INP0014	OIL SEAL 300G	20
INP0015	GAS TAP LUBRICANT 50G	20
INP0016	SAPPHIRE AQUA-SIL 85G	20
INP0017	AIR DUSTER 300ML	20
INP0042	LS-X	20
INP0043	LEAK FIX	20
INP0044	HAWK WHITE	21
INP0045	WATER HAWK	21
INP0046	SOLAR S1 10LTR	21
INP0047	HP-5 20LTR	21
INP0052	SHOCK RELEASE SPRAY 400ML	21
INP0054	FOLIAC MANGANESE 400G	21
INP0055	FUELSEAL 375G	21
INP0083	FOAM CLEANER 400ML	21
INP0084	HEAVY DUTY CLEANER SPRAY 300ML	21
INP0085	DE-ICER (300ML)	23
INP0092	LEAK DETECTOR SPRAY INVERTIBLE	23
INP0093	SMOKE MATCHES BOX OF 12	23
INP0094	SMOKE PELLETS 5GM	23
INP0095	SMOKE PELLETS 13GM	23
INP0096	SMOKE PELLETS ENC 8 GM	23
INP0215	PIPESEAL PTFE LIQUID 300G	23
INP0217	FOLIAC FLANGE SEAL 50ML	23
INP0220	TWINEFLON 175M	23
INP0276	SOLAR CLEANER C	24
INP0277	DS40 SYSTEM CLEANER	24
INP0291	FLUES IN VOIDS PAD	24
INP0292	GAS SAFETY INSPECTION REP PAD	24
INP0293	MAINTENANCE/SERVICE CHECK PAD	24
INP0294	LANDLORD GAS SAFETY RECORD PAD	24
INP0295	WARNING ADVICE NOTICE REP PAD	24
INP0296	BLUE PAPER TOWEL	24
INP0301	CLEAR SILICONE TUBING 1 X 2M	24
INP0302	RED RUBBER TUBE 1 X 18M	25
INP0303	DRAIN DOWN HOSE KIT	25
INP0305	LEAK DETECTION SPRAY 300ML	25
INP0307	AIR DUSTER 200ML	25
INP0308	WARNING STICKER-DANGEROUS X 10	25
INP0309	SMOKE MATCHES (TUB OF 75)	25
REGS15	FUMAX SMOKE PELLETS PACK OF 10	25
REGS25	FUMAX KS TUB OF 10 SMOKE PELLETS	25
REGZ20	HEAT SINK COMPOUND 25G TUBE	25
REGZ40	SILICONE GREASE 50G WRC APPRO	26

CONSUMABLES CONTINUED		Page
RT25-BK	RESCUE TAPE BLACK	26
RT25-BL	RESCUE TAPE BLUE	26
RT25-CL	RESCUE TAPE CLEAR	26
RT25-RD	RESCUE TAPE RED	26
9302379	COAL TOUCH UP (SPRAY)	26
INP0293	MAINTENANCE/SERVICE CHECK PAD	24
INP0294	LANDLORD GAS SAFETY RECORD PAD	24
INP0295	WARNING ADVICE NOTICE REP PAD	24
INP0296	BLUE PAPER TOWEL	24
INP0301	CLEAR SILICONE TUBING 1 X 2M	24
INP0302	RED RUBBER TUBE 1 X 18M	25
INP0303	DRAIN DOWN HOSE KIT	25
INP0305	LEAK DETECTION SPRAY 300ML	25
INP0307	AIR DUSTER 200ML	25
INP0308	WARNING STICKER-DANGEROUS X 10	25
INP0309	SMOKE MATCHES (TUB OF 75)	25
REGS15	FUMAX SMOKE PELLETS PACK OF 10	25
REGS25	FUMAX KS TUB OF 10 SMOKE PELLETS	25
REGZ20	HEAT SINK COMPOUND 25G TUBE	25
REGZ40	SILICONE GREASE 50G WRC APPRO	26
RT25-BK	RESCUE TAPE BLACK	26
RT25-BL	RESCUE TAPE BLUE	26
RT25-CL	RESCUE TAPE CLEAR	26
RT25-RD	RESCUE TAPE RED	26
9302379	COAL TOUCH UP (SPRAY)	26

DETECTORS AND ALARMS		Page
INP0027	CO ALARM 7 YEAR LIFE	28
INP0100	CO DETECTOR (SF450)	28
INP0316	CO ALARM 10 YEAR LIFE	28
7211366	BAXI CO SHUTDOWN CONTROL BOX	28
7211367	BAXI VOID CO SENSOR	28
7211368	BAXI ROOM CO SENSOR	28
7211998	CARBON MONOXIDE DETECTOR CO9B	28

FILTERS		Page
INP0056	BOILER BUDDY	30
INP0077	TF1 FILTER - 22MM	30
INP0078	TF1 FILTER - 28MM	30
INP0199	INTERPART MAGNETIC FILTER 22MM	30
INP0274	TF1 INSTALLERS PACK 22MM	30
INP0275	TF1 INSTALLERS PACK 28MM	30
INP0310	INTERPART MAGNETIC FILTER 28MM	30
5135210	MAGNACLEAN PROFESSIONAL 22MM	30
5135211	MAGNACLEAN TWINTTECH 22MM	30

PUMPS		Page
INP0117	HIGH EFFICIENCY 5M PUMP ASSY	34
INP0118	HIGH EFFICIENCY 6M PUMP ASSY	34

TOOLS AND EQUIPMENT		Page
F112	BOX SPANNER	36
INP0061	MANUAL RADIATOR VALVE 15MM	36
INP0087	POLAR PROF FREEZER KIT	36
INP0088	POLAR COM FREEZER KIT	36
INP0089	POLAR FREEZING SPRAY	36
TPPS15	KOPEX PIPE PREP 15 MM	36
TPPS22	KOPEX PIPE PREP 22 MM	36
TPSS15	KOPEX PIPE SLICE 15 MM	36
TPSS22	KOPEX PIPE SLICE 22 MM	36
TPSS28	KOPEX PIPE SLICE 28 MM	37
200455	FLUE BRUSH	37
212154	FLUE BRUSH	37
5107733	18" U GAUGE	37
5107734	FLOW CUP	37
5116089	DUST SHEET 12'X9' COTTON TWILL	37
5129604	CLAMP METER	37
5129605	AUTORANGE INSULATOR RES TESTER	37
5129607	WATER PRESSURE TEST GAUGE	37
5134839	PIPE CUTTER FOR 6MM-28MM PIPE	38
5134840	PIPE BENDER FOR 15 & 22MM PIPE	38
5134841	MINI PIPE BENDER - 8,10MM TUBE	38
5134842	RADIATOR ALLEN KEY	38
5134844	U GAUGE 24"	38
5134845	SOLDER MAT (ECONOMY)	38
5135151	S156 KNEE PADS BLACK (PR)	38
5135191	5 POCKET TOOL & NAIL POUCH	38
5136248	PIPE CUTTER 3MM-22MM	38
595012	BRUSH FLUE 6'X 2'DIA X 24'LG	39
595016	BRUSH FLUE 8'X 2'DIA X 51'LG	39
907736	FLUE SCRAPER C/W HANDLE PRO 1	39

VALVES		Page
HPA2	2 PORT VALVE,ACTUATOR ONLY	42
HSA3	3 PORT VALVE ACTUATOR ONLY	42
HSV3	3 WAY VALVE BODY	42
INP0063	BY PASS VALVE 22MM ANGLE	42
INP0064	BYPASS VALVE 22MM STRAIGHT	42
INP0065	BOILER PRESSURE RELIEF VALVE	42
INP0066	UNIVERSAL SUPERFIT T/COUPLE	42
INP0104	ZONE ACTUATOR HD 5 W-E	42
INP0105	MID POS ACTUATOR HD 4 W-E	42
INP0108	ZONE VALVE ASS 22 MM 5 W-E	43
INP0109	MID POS VALVE ASS 22 MM 4 W-E	43
INP0112	ZONE VALVE ASSY 28MM 5 W&E	43
INP0113	MID POS ASSY 28MM 5 W&E	43
INP0210	T&P RELIEF VALVE 6 BAR	43
INP0269	BIOFLO CONTROL PACK 22MM	43
INP0270	TWINZONE CONTROL PACK 22MM	43
MPE222	TWO PORT ZONE VALVE 22MM	43
MPE322	THREE PORT MID POS VALVE 22MM	43
MPE328	THREE PORT MID POS VALVE 28MM	44
Q309A2788	HONEYWELL THERMOCOUPLE	44
SD2701	ACTUATOR SD2701	44
SYNCHRON MOTOR	SYNCHRON MOTOR	44
VR4700C4022	HONEYWELL GAS VALVE	44
V4043H1056	HONEYWELL ZONE VALVE 22MM	44
V4043H1106	HONEYWELL 28MM ZONE VALVE 2 PORT	44
V4073A1039	HONEYWELL THREE PORT MID POS VALVE 22MM	44
V4073A1088	HONEYWELL THREE PORT MID POS VALVE 28MM	44
V4400C1237	HONEYWELL GAS VALVE TRADELINE	45
V4600C1086	HONEYWELL GAS VALVE TRADELINE	45
V4700E1098	HONEYWELL GAS VALVE ASSY	45
5111137	DIAPHRAGM REP KIT DWH (COMBI)	45
5111138	DIAPHRAGM REP KIT PRI (COMBI)	45
5111139	DIAPHRAGM REP KIT PRI (MAX/IN)	45
5111140	DIAPHRAGM REP KIT DWH (MAX/IN)	45
5111141	DIAPHRAGM REP KIT (SYSTEM)	45

WATER TREATMENT		Page
INP0010	X100 CONCENTRATE	50
INP0011	INP0011	50
INP0012	X400 CONCENTRATE	50
INP0020	X100 SENTINEL RAPID DOSE	50
INP0021	X200 SENTINEL RAPID DOSE	50
INP0022	X400 SENTINEL RAPID DOSE	50
INP0023	SENTINEL RAPID DOSE LEAK SEALER	50
INP0029	PROTECTOR F1 (LIQUID)	50
INP0030	PROTECTOR F1 EXPRESS (AEROSOL)	50
INP0031	SUPERCONCENTRATE PROTECTOR F1	51
INP0032	CLEANER F3 (LIQUID)	51
INP0033	SUPERCONCENTRATE CLEANER F3	51
INP0034	CLEANER F5 EXPRESS (AEROSOL)	51
INP0035	POWERFLUSHING CLEANER F5	51
INP0036	BOILER NOISE SILENCER F2	51
INP0037	NOISE SILENCER F2 EXPRESS	51
INP0038	SUPERCONCENTRATE SILENCER F2	51
INP0039	LEAK SEALER F4 (LIQUID)	51
INP0024	RAPID DOSE FILL'G LOOP ADAPTOR	52
INP0079	INHIBITOR OWN BRAND 1 LTR	52
INP0312	INHIBITOR OWN BRAND 500ML	52
INP0080	CLEANER OWN BRAND 1 LTR	52
INP0313	CLEANER OWN BRAND 500ML	52
INP0081	SILENCER OWN BRAND 1 LTR	52
INP0314	SILENCER OWN BRAND 500ML	52
INP0082	LEAK SEALER OWN BRAND 1 LTR	52
INP0315	LEAK SEALER OWN BRAND 500ML	52
INP0272	ENERGY SAVER F6	53
INP0273	ALPHI 11-5 LITRE	53
X100	INHIBITOR 1 LITRE BOTTLE	53
X200	NOISE REDUCER 1 LITRE BOTTLE	53
X300	PRE COMMISSION CLEANER 1 LITRE	53
X400	SLUDGE REMOVER 1 LITRE BOT	53
X800	JETFLO 1 LITRE BOTTLE	53
INP0040	LEAK SEALER F4 EXPRESS	53
INP0041	S-CONCENTRATE LEAK SEALER F4	53
INP0048	SUPERCON. L/SCALE PREVENTER	54
INP0050	ELECTROLYTIC SCALE REDUCER	54
INP0051	MAGNETIC SCALE REDUCER	54
INP0279	FERNOX LIMESCALE REMOVER DS-3 - 2KG	54
INP0280	FERNOX SYSTEM HEALTH CHECK	54
5119544	HEAT TRANSFER FLUID 10 LITRES	54



To find your nearest stockist,  
please call 0844 871 1540



[www.baxigenuineparts.co.uk](http://www.baxigenuineparts.co.uk)

All products are subject to availability.  
We reserve the right to change specification and  
appearance without prior notice. e&oe